



Franklin County

Sequential Intercept Model

Revised: November 2022

Participant List

Thanks to the following members of the CJAB Behavioral Health Committee for their input into this document.

William Bechtold, Warden, Franklin County Jail

Casey Bogner, Public Defender's Office

Stacey Brookens, Administrator, MH/ID/EI

Dan Brown, Grants and CJAB Coordinator

Misty Conner, Housing Navigation Coordinator, Community Connections Division

James Eagler, Director, Franklin/Fulton Drug & Alcohol Department

Kim Eaton, Director, Community Connections Division

John Flannery, Commissioner

Melyssa Flud, Director of Special Services, Franklin County Jail

Minnie Goshorn, Director Children & Youth Services

Glenda Helman, Director, Grants Management

Stacie Horvath, Administrator, Human Services

Tawnya Hurley, Director Office on Aging

Missy Reisinger, Director, Tuscarora Managed Care

Lillian Rodriguez, Information/Referral & PA LINK Coordinator

Cori Seilhamer, Program Specialist and CIT Coordinator, Mental Health Department

Justin Slep, Director, Veterans Affairs

Angela Stoner, Deputy Court Administrator

John Thierwechter, Assistant County Administrator

Michelle Weller, Deputy Warden, Franklin County Jail

Douglas Wilburne, Chief Officer, Adult Probation

Stacy Yurko, Housing Program Specialist, Community Connections Permanent Supportive

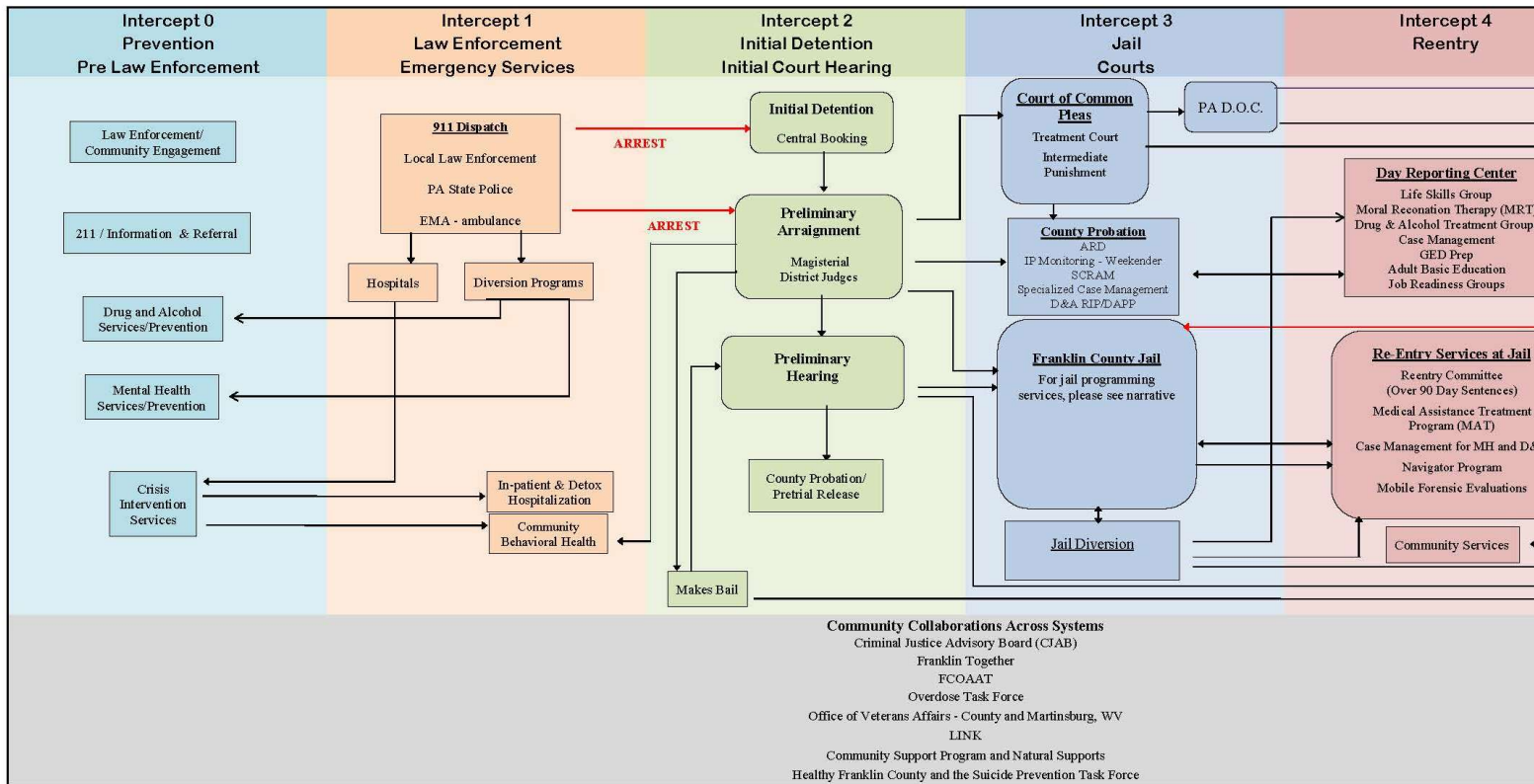
Introduction

The following report includes the results from annual the Sequential Intercept Model (SIM) session conducted by the Behavioral Health subcommittee of the Franklin County Criminal Justice Advisory Board. Franklin County's original intercept model and report was the product of an April 2009 National GAINS Center *ACTION: Cross-Systems Mapping and Taking Action for Change* workshop sponsored by the Franklin County Commissioners and the Criminal Justice Advisory Board (CJAB). Both the 2009 and 2012 workshops and reports were funded by the Pennsylvania Commission on Crime and Delinquency.

Our model is a work in progress: thanks to the efforts of many community stakeholders we have added programs as they are available to address the gaps identified in the SIM sessions. In addition, to make the model even more of a robust planning tool, in 2012 we added information that would assist in identifying resources and gaps related to individuals with substance use disorders. In 2017 we incorporated the latest research on SIM development by adding an Intercept "0" to our model. Finally in 2022, we incorporated information and resources from the County's new Community Connections Division, which also encompasses reentry services.

Franklin County Cross Systems Map – October 2022

Broad program categories are represented within the map. Specific program details can be found in the narrative below.



Intercept 0: Crisis Response Services

Intercept 0 is a recent addition to the model. Programs in this intercept offer early intervention for individuals whose behavioral health conditions put them on course for contact with law enforcement. This intercept encompasses systems and services designed to connect those in need with treatment and/or services before a behavioral health crisis begins or at the earliest stage of system interaction.

Community Supports

[PA211/Franklin County Information and Referral](#) – Franklin County Human Services Information and Referral (I&R) is a resource intended for public use. Individuals who are uncertain how to access the information or services that they desire are encouraged to contact us at (717) 261-2561. If the desired information is not directly at hand, I&R will actively research and respond to the inquiry as quickly and efficiently as possible. Simply dial 2-1-1 or call (717) 261-2561. Assistance via phone is available 24 hours a day, 7 days a week.

PA LINK- link to Aging and Disability Resources is a nationwide effort to take a seamless approach in the way we assist the aged and disabled community members. These individuals who need help in their day-to-day life must be 60 and over or any age if disabled to receive services. The LINK Coordinator finds resources and services needed to help them live safe and healthy lives and or age in place. That may include referrals, assistance completing applications to get services needed, helping them problem solve or plan.

Housing Assistance – Franklin County Community Connections Division oversees this system which assesses an individual's homeless status and makes referrals to appropriate programs. This service is the front door to all housing programs in Franklin County including Street Outreach which can provide basic life needs for homeless individuals. Individuals who are uncertain of how to access the information or services that they desire are encouraged to contact the Housing Navigation Coordinator at 717-261-3893. If it is outside of county business hours individuals can access the system by calling 2-1-1. Assistance via phone is available Monday through Friday, 9:00 AM to 4:00 PM.

Employment Assistance – Franklin County offers programs such as Stepping Forward Works, and Equus Work Solutions through the United Way, and our local CareerLink office. Some transitional housing providers also offer assistance with job searches.

Transportation – [Rabbittransit](#) Shared Ride and the Stop Hopper options can offer discounted [fares](#) for rides.

GIS resources – Franklin County provides access to an interactive mapping portal to allow access to available services for areas such as: mental health , nutrient nutrition, and recreational areas. <https://gisportal.franklincountypa.gov/>

Franklin County Older Adult Advocacy Team (FCOAAT) – composed of representatives from

Aging, Mental Health and other departments/agencies; goal is to identify needs and potential resources to appropriately address needs in a collaborative manner.

Crisis Services

Crisis Intervention Program – Crisis Intervention Specialists assess the needs of the caller and assist the caller in developing a plan for resolution which may include referrals to other services in the community, a recommendation to come in to the hospital for further evaluation, etc. The Crisis Intervention Program is operational 24/7 for telephone and mobile services. Walk-in services are available 8:00AM-7:00PM Monday through Friday. [Keystone Crisis Services](#) Hotline: (866) 918-2555.

Keystone Crisis - is also a call center for 988. 988 has been designated as the new three-digit dialing code that will route callers to the National Suicide Prevention Lifeline. This line replaces the current toll-free National Suicide Prevention Lifeline 1-200-273-8255. The 988 Lifeline is designed to become a simple alternative to both 911 and the existing 1-800 number.

Mental Health Emergency Delegate – A delegate assesses if there should be an involuntary commitment of an individual due to their acting as a danger to themselves or others. If the individual is under the influence of drugs or alcohol, the assessment will occur when the individual is medically cleared.

Crisis Intervention Team (CIT) – An innovative community partnership program of police-based crisis intervention involving law enforcement, mental health, and advocacy partnerships, CIT is a pre-jail diversion program that directs individuals with mental illness away from the criminal justice system and into treatment where they can be better served.

[Crisis Hotline for Substance Use](#) – a 24-hour hotline for individuals in need of substance use withdrawal management (detox) services. Hotline: (866) 769-6822.

Substance Use

Certified Recovery Specialist Services – This program is offered to Medical Assistance (MA) eligible adults, 18 years and over, who have been diagnosed with a substance use disorder (SUD); participants may also have co-occurring mental health disorders (COD). The program focuses primarily on individuals who have had a high re-entry rate into SUD/COD treatment settings and assists persons transitioning to the community from residential treatment.

Medication ‘Take Back’ Boxes – Franklin County *currently* has eight (8) seven law enforcement agencies (LEAs) and the Coroner’s Office that have permanent medication collection boxes within their lobbies for the community to properly dispose of their unused, unwanted and expired medications.

Naloxone/Overdose Response [All Intercepts] – Operation Save A Life (OSAL) is a community-based opioid overdose response/naloxone administration training that educates community residents on how to recognize the signs/symptoms of an opioid overdose, how to respond to an opioid overdose and how to properly administer inter-nasal naloxone.

Anyone can be trained; however, an individual must be 18 years or older to receive/purchase naloxone.

Recovery Housing [Intercepts 0, 1, 4 & 5] – Substance use recovery housing ensures that individuals who struggle with substance use disorder have an opportunity to engage in recovery/substance-free housing as needed. Each individual's journey to recovery can look different; however, individuals often need an environment conducive to their recovery. Currently Franklin County has two DDAP licensed Recovery Houses (Noah's House for men and Gracie's Place for women).

Law Enforcement

Community Engagement – Community programs such as 'Coffee with A Cop' are offered to promote positive interactions with law enforcement. The Franklin County Sheriff's Office participates in a host of community engagement projects outreaching to all age groups; including Deputy Phil which promotes positive choices for elementary students.

Walk-ins – Individuals receive information and assistance by walking into a police station and relaying needs.

Mental Health

Case Management– Coordinates a variety of community services, monitors the services, and advocates for individuals living with a serious mental illness.

Peer Services [Peer Specialist] – Through mentoring, support, and service coordination, peer specialists help participants achieve personal wellness goals and cope with challenges. Lived experience, combined with specialized training and ongoing support, allows Certified Peer Specialists to be effective in assisting program participants to reach their own recovery goals. This service is available at all intercepts.

Mobile Psychiatric Nurse – This is a Registered Nurse (RN) who provides Mobile Psychiatric Nurse functions to the residents of Franklin/Fulton County with an emphasis on the following specific areas: education and training, consultation, and, assessments.

Warm Line – This program offers phone support for community members staffed by trained individuals with lived experience. This allows the crisis intervention service to focus more exclusively on the individuals who are in crisis.

Prevention Education – County prevention education includes evidence-based programs, education information, drug and alcohol presentations and trainings.

Case Assisted Re-Entry (CARE) Program - The CARE program provides screening, risk assessment, case management, and support to individuals who have a mental health disorder and are involved in the criminal justice system. CARE can link participants to resources to help stabilize the person's mental health condition by utilizing psychiatric consult, medication management, therapy, and peer support. The type of assistance offered

is dependent on each person's individual needs. CARE program resource linkages include mental health services, substance use services, medication management, peer support, educational/vocational assistance, transportation, and housing.

Intercept 1: Law Enforcement and Emergency Services

Intercept 1 is the first point of interception by law enforcement; programs focus on pre-arrest diversion. At this intercept, law enforcement plays an important role in helping to manage individuals experiencing a behavioral health crisis.

Dispatch/Emergency Services/911 – When the Department of Emergency Services receives a 911 call regarding an individual experiencing some sort of distress, appearing to be at risk of an overdose, or posing a risk to themselves and/or others, the police are dispatched and an ambulance is staged. In cases where the individual is not presenting as a risk, they may be transferred to Crisis Intervention Services for further assistance/evaluation.

Diversion Programs

Get Back Up/ Pre-trial Drug & Alcohol Program – When law enforcement identifies a case involving drug use, an officer assesses the individual to determine if diversion to drug and alcohol treatment is more appropriate than filing a criminal complaint. If so, a referral is made to the Recovery Liaison with the Get Back Up program.

Mental Health Co-Responder Program – The Co-responder assists law enforcement by responding to individuals who appear to have a mental health issue. Working as a 'community liaison,' the co-responder intercedes with law enforcement, diverting some individuals away from the criminal justice system by attempting to get them involved in services.

Crisis Intervention Team – *See Intercept 0 Program List*

Warm Hand-off Case Management

Mental Health Emergency Delegate – *See Intercept 0 Program List*

Law Enforcement

Domestic Violence Lethality Assessment – Chambersburg and Waynesboro law enforcement agencies (LEAs) and the Franklin County Sheriff's Department use this tool to gauge how dangerous a person accused of domestic violence may be. It also gives the victim access to services.

Intercept 2: Initial Hearings and Initial Detention

The next point of interception is post-arrest diversion programming. Even with the best behavioral health service systems and pre-arrest diversion programs, some individuals with behavioral health

issues will be arrested. Depending on the nature of the crime and circumstances, a person may be eligible for diversion to treatment.

Probation

ARD – The Accelerated Rehabilitative Disposition (ARD) program is a pre-trial alternative for certain first-time offenders facing disposition on a non-violent offense. The District Attorney's Office established the eligibility criteria and must approve the offender's application. The Adult Probation and Parole Department supervises those placed into the program. Successful participants can earn a dismissal of the charges and are eligible for an expungement.

Pre-Trial Diversion – Pre-Trial Diversion, also known as Pre-Trial Release, allows for certain low-risk offenders to be placed on pre-trial supervision rather than remain in jail because of their inability to post bail.

Intercept 3: Jails and Courts

In an ideal system, the majority of individuals with behavioral health issues that have committed an offense and who meet the criteria for diversion will have been filtered out of the criminal justice system in Intercepts 1 and 2. Intercept 3 programs offer the individuals who are incarcerated prompt access to high-quality treatment within the jail setting.

Court-Based Programs

Good Wolf Treatment Court – A court-supervised treatment program for non-violent high-risk, high-need individuals with a substance use disorder.

Expedited Medicaid Eligibility – Franklin/Fulton Drug & Alcohol (FFDA) works in partnership with PerformCare, Tuscarora Managed Care Alliance and the local County Assistance Office to provide an expedited enrollment process for incarcerated individuals who meet the level of care for residential substance use/co-occurring disorder treatment. This process allows FFDA to assist the offender in applying for Medicaid while incarcerated and secure a residential treatment bed all while expediting their Medicaid benefits to be active on the date of their release to residential treatment.

In- Jail Programs

AA/NA/Celebrate Recovery (in Jail) – These addictions recovery groups use 12 steps that emphasize reliance on social support and a higher power. Meetings are led by volunteers who bring meetings directly into the jail.

Children's Visitation (in Jail) – The jail partners with Children and Youth to provide bi-weekly contact visits between incarcerated parents and their children who are in care.

Case Review Task Force – Case Review is a designated task force functioning under the Franklin Together Reentry Coalition. This group reviews and assists individuals who have

reached their minimum sentence, but cannot be released from jail for various reasons such as being unable to obtain a viable home plan, needing assistance with treatment needs, or needing help with other things like obtaining ID.

Faith Based programs/Volunteer (in Jail) – Jail volunteers provide a variety of religious services ranging from formal church services to informal group studies. The goal is to not only meet inmates' spiritual needs while they are incarcerated, but also to establish faith-based supports when they return to the community.

GED – Jail staff can work with individuals wanting to obtain their GED.

Intensive Reentry Case Management [Intercepts 3&4] – The Franklin County Intensive Reentry Case Management Program ensures a re-entrant's continuity of care and improves quality of life outcomes through a collaboration of supportive services and intensive case management, beginning prior to release and continuing as participants transition back into the community. Services can include housing, MH, D&A, life skills, parenting classes, etc. as determined by the individual's assessed needs.

Jail To Community Treatment Program (Jail Medication Assisted Treatment program) [Intercept 3, 4 & 5] – This program allows for eligible inmates to receive Medication Assisted Treatment (MAT) for substance use and co-occurring disorder prior to release from jail and continuing into the community.

[Keystone Navigator Program](#) [Intercept 3 & 4] – Assists individuals in applying for Medical Assistance (MA) both in Jail and in the community.

Mental Health Services – The jail offers individual MH therapy, medical therapy and MH wellness groups to facilitate the changing of maladaptive thought processes that lead to recidivist patterns of behavior.

Forensic Mobile Assessments – Psychiatric assessments for individuals in the jail thought to have a serious mental illness (SMI), so that recommendations and access to services will be available for discharge planning and/or upon release.

Certified Peer Support Services – This program seeks to provide one-to-one support to adults with mental illness in a way that helps each person achieve his or her full potential. It is a service for individuals with mental illness provided by individuals with mental illness. The peer specialists receive extensive training and certification.

Service Access Management (SAM) Forensic Case Manager – A SAM case manager connects individuals with an SMI to needed resources prior to release, so that they are supported upon release.

Sex Offender Group – This group treatment program is designed to intensely target individuals who have been convicted of a sexually related crime. The group uses a series of assessments and therapies to change their sexually abusive behavior patterns.

Weekender Program – Inmates deemed eligible by the Court may be sentenced to the Weekender Program at the Franklin County Jail and serve the term of incarceration imposed as part of a County Intermediate Punishment sentence on weekends in lieu of a continuous term of incarceration. The goal of the Weekender Program is to maintain the employment of gainfully- employed offenders while providing a service to the community.

TARGET (Advanced Trauma Solutions) – This program is a strengths-based, present-centered, and multi-layered bio-psychosocial approach to teaching self-regulation skills to people who have experienced chronic stress, adversity, or trauma and are having difficulty resetting their brain’s ALARM. TARGET is an educational and therapeutic intervention for the prevention and treatment of traumatic stress disorders.

Probation and Parole Programs

ARD – The Accelerated Rehabilitative Disposition (ARD) program is a pre-trial alternative for certain first-time offenders facing disposition on a non-violent offense. The District Attorney's Office established the eligibility criteria and must approve the offender's application. The Adult Probation and Parole Department supervises those placed into the program. Successful participants can earn a dismissal of the charges and are eligible for an expungement.

County Intermediate Punishment (IP) [Intercepts 3, 4, & 5]– IP is designed to provide the Courts with sentencing alternatives in lieu of confinement or following short periods of incarceration, providing a middle ground between total confinement and traditional probation and parole. The County Intermediate Punishment Plan provides the Courts with an array of alternative sentencing options, including restrictive intermediate punishment programs and restorative sanction programs such as Work Release Program, Weekender Program, Electronic Monitoring Program, Intensive Supervision Program, Drug Testing Program, Fines and Victim Restitution Program, and Community Service Program.

Drug and Alcohol Probation Program (i.e. DAPP, D&A RIP) [Intercepts 2, 3, 4, & 5] – For individuals convicted with non-violent Level 3 and 4 offenses as defined by the Pennsylvania Commission on Sentencing and assessed as drug or alcohol dependent, this program combines the efforts of a dedicated Drug and Alcohol Intensive Case Manager (ICM), a dedicated and experienced Probation Officer, and local treatment providers into a single collaborative team that supports and monitors program eligible offenders in the community. The DAPP team maintains regular contact with the offender, employer, treatment providers, and family in an effort to promote a stable living and working environment for the offender. IP sentences can include Work Release, Electronic Monitoring, and Intensive Supervision, Secure Treatment Facilities or any combination of these to satisfy the Restrictive Intermediate Punishment (RIP) component.

Electronic Monitoring (i.e. EM, SCRAM) – The program provides a middle ground between incarceration and traditional probation and parole. It was designed to provide the Court with sentencing alternatives in lieu of incarceration or following a period of short incarceration.

Mental Health Supervision – This program provides a dedicated, specially trained, officer to supervise the unique segment of the probation and parole clientele that display mental

health needs. This program focuses on protecting the community and the offender. To combine a structured level of close supervision with an effective treatment program, the program works in tandem with local MH treatment facilities.

Sexual Offender Group – This program supervises offenders who have committed sexual offenses. These cases are managed by providing surveillance, monitoring, and treatment. The probation and parole officer works in conjunction with treatment providers to assist in re-educating the offender. The officer assesses the overall status of the offender for specialized treatment and intervention needs, develops and implements intervention strategies necessary to reduce criminal behavior, and meets regularly with offenders in the office and in the community. The officer also monitors the progress of offenders in treatment or therapy, prepares Court-ordered pre-sentence investigation reports, schedules violation hearings, and performs duties related to Megan’s Law DNA requirements.

Specialized Case Management – The probation and parole officer works in conjunction with treatment providers to assist in reducing criminal behavior.

State Intermediate Punishment (SIP) [Intercepts 3, 4, & 5] – State Intermediate Punishment (SIP) is designed for individuals convicted of drug-related offenses, a crime that was motivated by the defendant's consumption of or addiction to alcohol and other drugs. Most SIP inmates are low-level offenders. Both the prosecutor and the sentencing judge must recommend individuals to become involved in SIP.

Intercept 4: Reentry from Jails and Hospitals

Intercept 4 facilitates a continuity of care between corrections and community behavioral health systems for incarcerated individuals with behavioral/mental health issues who leave the jail.

Recidivism can be decreased by providing assistance for reentering individuals to make a successful transition back into the community.

Jail Reentry Services

Case Assisted Re-Entry (CARE) Program - The CARE program provides screening, risk assessment, case management, and support to individuals who have a mental health disorder who are involved in the criminal justice system. CARE can link participants to resources to help stabilize the person’s mental health condition by utilizing psychiatric consult, medication management, therapy, and peer support. The type of assistance offered is dependent on each person’s individual needs. CARE program resource linkages include mental health services, substance use services, medication management, peer support, educational/vocational assistance, transportation, and housing.

Drug & Alcohol Case Management – Drug & Alcohol Case Managers perform level of care assessments and provide assistance with substance use treatment placements through coordination of care while providing case management support during the individual’s treatment. Case Managers perform these functions for anyone in need of them, regardless of age or funding type at the time of the level of care assessment. FFDA prioritizes case management services for individuals involved in the forensics system (jail, adult probation, juvenile detention, and DUI offenders).

Good Wolf Treatment Court – [Intercept 3 & 4] – *See Intercept 3 Program List*

Navigator Program – *See Intercept 3 Program List*

Medication Assisted Treatment (MAT) – *See Intercept 3 Program List*

Mental Health Case Management – *See Intercept 0 Program List*

Reentry Committee – This group of jail staff and community service providers meets weekly to discuss inmates with complex needs who may have issues with home plans upon release.

Expedited Medicaid Eligibility – [Intercept 3 & 4] – *See Intercept 3 Program List*

Medication

Case Assisted Re-Entry (CARE) Program – *See Intercept 4 Program List*

Expedited Medicaid Eligibility – *See Intercept 3 Program List*

Naloxone/Overdose Response – *See Intercept 0 Program List*

TARGET (Advanced Trauma Solutions) – [Intercepts 3&4] – *See Intercept 3 Program List*

Intercept 5: Community Corrections and Community Support Services

Intercept 5 programs involve continuing supervision in the community by the criminal justice system as well as community based supportive services for individuals with behavioral health issues.

Adult Probation/Parole – The main objective of the Franklin County Adult Probation/Parole Department is to effectively monitor criminal offenders living and working in the community.

Behavioral Health Services – Community based services and County provided services.

Drug & Alcohol Treatment – The Franklin/Fulton Drug and Alcohol Program (FFDA), often referred to as the SCA or "Single County Authority," has contracted with the Department of Drug and Alcohol Programs (DDAP) to oversee and/or carry out the administration, implementation, and completion of drug and alcohol services within Franklin and Fulton Counties focusing on prevention, intervention, case management, and recovery support.

Employment

Stepping Forward Works – This program addresses job and employability by providing occupation-specific job training for the unemployed and underemployed within Franklin County.

Mental Health Case Management – *See Intercept O Program List*

Mobile Psychiatric Nurse – *See Intercept O Program List*

Recovery Support Services – encompasses the following services in Franklin: Certified Recovery Specialist services within licensed Drug/Alcohol Outpatient Treatment clinics, Recovery Housing, Recovery Recreational Center services, Parent Child Interaction Therapy, Trauma Focused - Cognitive Behavior Therapy, School Based Outpatient Programs in every school district, Family Based Mental Health Services, Critical Time Intervention, Strengthening Families Program, Too Good For Drugs, Too Good For Violence, Teen Intervene, Interrupted, Girls Circle, Student Assistance Program (encompasses elementary, middle and high school target audience for both drug/alcohol and mental health).

ALL Intercepts: Community Collaborations Across Systems

[Area Agency on Aging](#) – The Franklin County Area Agency on Aging provides a planned program of supportive services to those sixty years of age and older, intended to optimize independence, promote consumer choice and enhance quality of life. The Aging Department can be reached at 717-263-2153. The Aging Department can help with providing transportation passes to be used with Rabbittransit, to some Aging Consumers who are linked within certain Aging Programs. Additionally, the Aging Dept. encourages seniors to utilize Senior Reach at 717-264-4301. The Senior Reach program provides the senior with a Peer Specialist/Call Specialist, which is an individual who will call the senior on a regular basis to check in. The program is designed to reduce social isolation.

[Community Support Program \(CSP\)](#) – This program consists of recipients of mental health services, family members, mental health professionals, and other community members working together to help adults with serious mental illnesses and co-occurring disorders live successfully in the community. The cornerstone of CSP is the bringing together of families, friends, professionals and other natural supports into the lives of people with mental illness. CSP sponsors a variety of activities throughout the year to raise awareness and provide education to the community.

[Criminal Justice Advisory Board \(CJAB\)](#) – A forum of leaders that addresses the immediate and future needs of the county by researching, planning and recommending solutions that will integrate and prioritize the best approaches to criminal justice policies and program planning.

Franklin County Older Adult Advocacy Team (FCOAAT) – This team consists of a partnership with advocates, [Area Agency on Aging](#), mental health, crisis, and first responders. Their mission is to bridge the gap in aging and mental health services for individuals age 60 and over. FCOAAT intervenes, assesses, and refers to SAM for case management and outpatient services for ongoing support.

[Franklin Together Reentry Coalition](#) – This group is a community collaboration focused on empowering and supporting formerly incarcerated individuals and their families to reduce recidivism and assist them in becoming contributing members of the community.

[LINK](#) – Pennsylvania Link to Aging and Disability Resources is a collaborative effort among community agencies and the Pennsylvania Department of Aging to provide information about supports and services for individuals over the age of 60 and for persons of all ages with disabilities.

[Office of Veteran Affairs](#) – Serves the needs of area veterans and their families through benefit coordination, outreach, and advocacy.

[Overdose Task Force](#) – A group of medical professionals, law enforcement, faith communities, and recovery community that collaborate to strategically combat opioid overdose and overdose deaths.

[Healthy Franklin County and the Mental Health Task Force](#) - Healthy Franklin County is composed of key community leaders from the education, health, faith, business, nonprofits and local government sectors. Their goal is to create and support healthy behaviors and lifestyles through education, awareness, programs, and access to services.

Housing Assistance – Franklin County Community Connections Division oversees this system which assesses an individual's homeless status and makes referrals to appropriate programs. This service is the front door to all housing programs in Franklin County including Street Outreach which can provide basic life needs for homeless individuals. Individuals who are uncertain of how to access the information or services that they desire are encouraged to contact the Housing Navigation Coordinator at 717-261-3893. If it is outside of county business hours individuals can access the system by calling 2-1-1. Assistance via phone is available Monday through Friday, 9:00 AM to 4:00 PM.

Top Priorities – Additional items will be discussed at the next Behavioral Health Meeting

1. Community Crisis Response Needs
2. Mental Health Community Health Needs
2. Housing and Resources
4. Complex Case Needs
5. Outcomes

To include areas/populations such as: Generational Risk, Early Intervention/Prevention, Persons with Health Conditions; Traumatic Brain Injury (TBI), Aging Population, Persons with Dementia, Persons who become aggressive during a stroke, LGBTQ.

Next Steps

The Franklin County Criminal Justice Advisory Board (CJAB) will offer recommendations on coordinating efforts to address identified top priorities. Since 2009, the SIM has been used as a resource for referencing available behavioral health services. In order to ensure that it be maintained as a resource, the CJAB Behavioral Health Committee is charged with its annual review and facilitating its update. This will be an ongoing action item for the Behavioral Health Committee in a continued effort to improve the continuum of criminal justice/behavioral health services in Franklin County.